

# Stellwagen Bank National Marine Sanctuary

2190 sq. km.

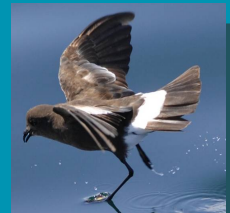
Boston

**Mission:** We conserve, protect, and enhance the biological diversity, ecosystem services, and cultural legacy of Stellwagen Bank National Marine Sanctuary. Science, innovation, partnerships, and public engagement guide our work.



**Benjamin Haskell**  
Deputy Superintendent

# High Biodiversity + Many Human Uses = High Risk Area





# Final Management Plan

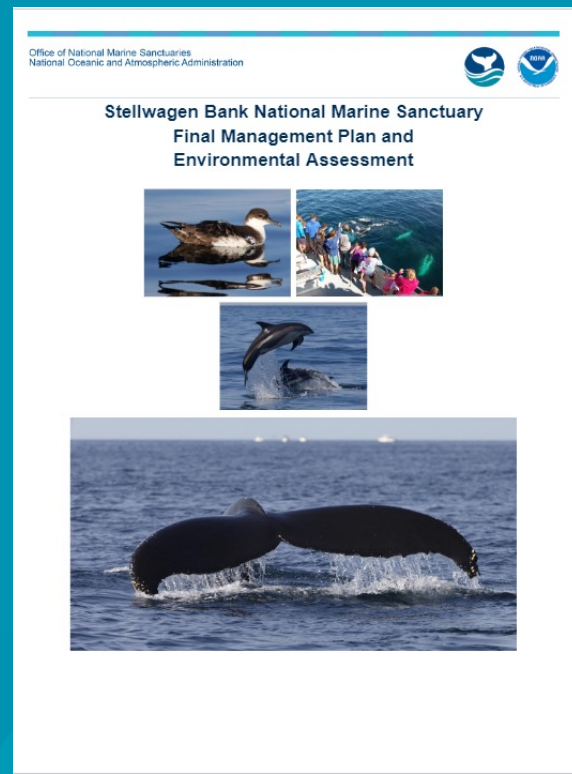


## 15 Action Plans

- Marine Mammal Protection
- Seabird Research
- Vessel Traffic
- Maritime Heritage and Cultural Landscapes
- Compatible Uses
- Climate Change
- Education and Outreach
- Interagency/Intergovernmental Coordination
- Sanctuary Advisory Council
- Research and Monitoring
- Soundscape
- Water Quality Monitoring
- Habitat
- Ecosystem Services
- Administration and Infrastructure Capacity

## Selected Priorities

- Reduce whale entanglements
- Reduce shipstrikes
- Reduce seabird bycatch
- Promote ropeless fishing traps
- Valuation of ecosystem services
- Improve internal capacity



# Self-Assessment Tool Results



Overall Score

7.8



## Management Effectiveness Scores

### Marine Management Group Scores

Group	Score	Max Score	%
MPA Management Framework	36	40	90.00%
Addressing Activities & Threats	57	84	67.86%
Research and monitoring	64	79	81.01%
Outreach and engagement	20	28	71.43%
Management effectiveness	29	33	87.88%
Total	206	264	78.03%



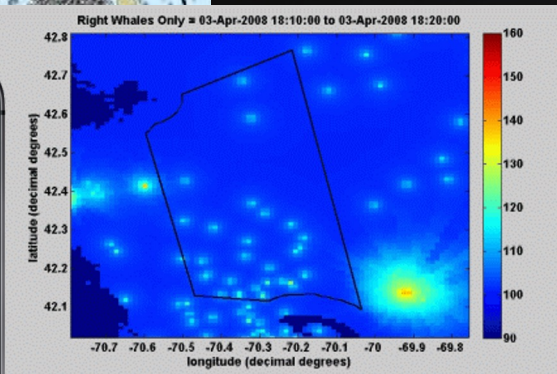
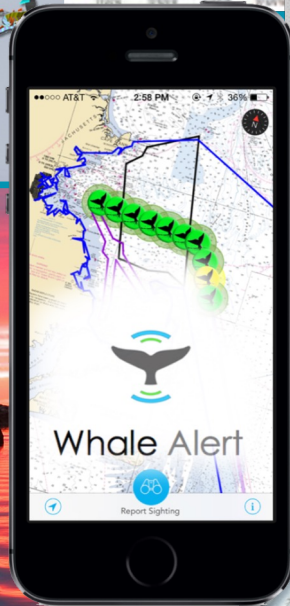
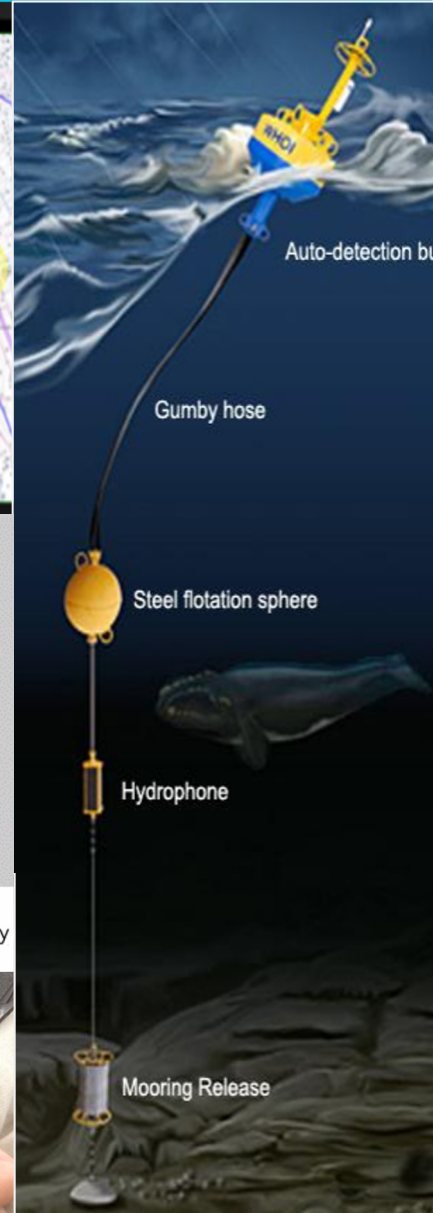
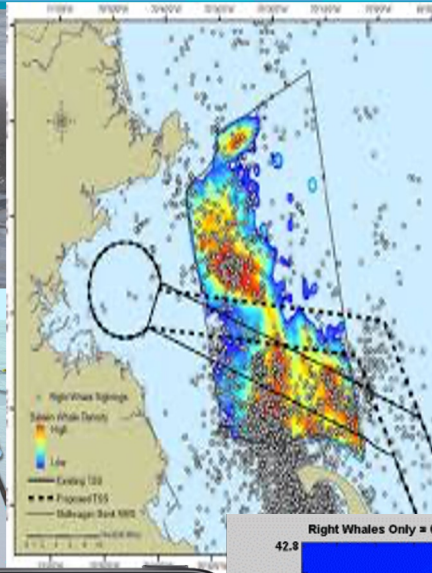
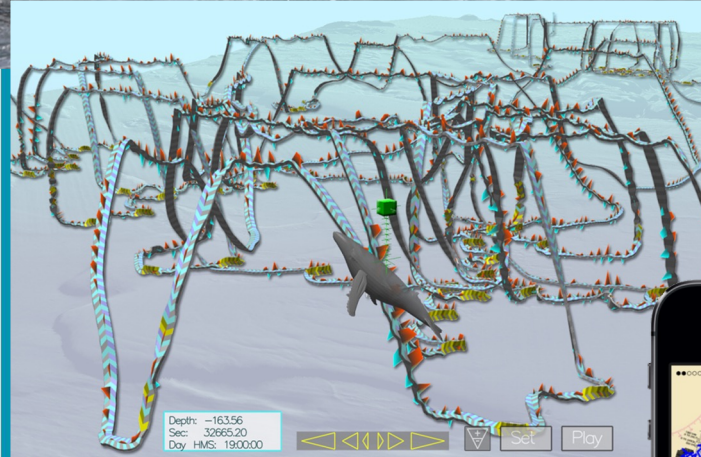
# Self-Assessment Tool Results



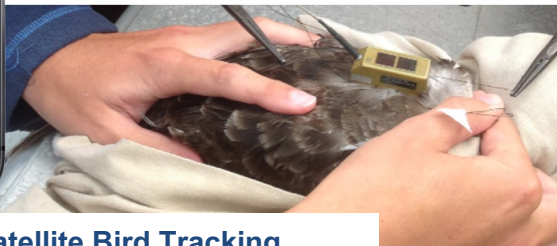
## MPA Threats

Section	Score	Max Score	%
Whale, dolphin and sirenian watching	8	15	53.33%
Noise management	11	14	78.57%
Entanglement in fishing gear and other installations	7	8	87.50%
Marine Mammal By-catch (fishing)	13	25	52.00%
Marine mammal collision / strike	18	22	81.82%
Marine mammal strandings (by MPA management or stranding network etc.)	0	0	0%

# Harnessing Technology to Build Capacity



NATIONAL OCEANIC AND ATMOSPHERIC ADMINISTRATION The Cornell Lab of Ornithology



ARGOS Satellite Bird Tracking

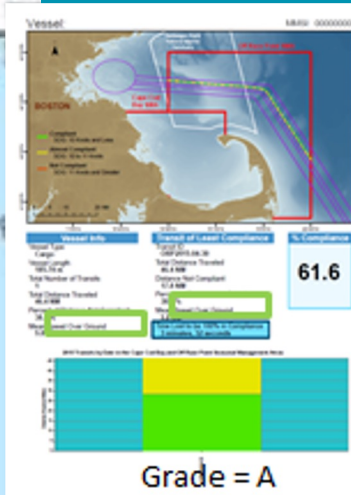
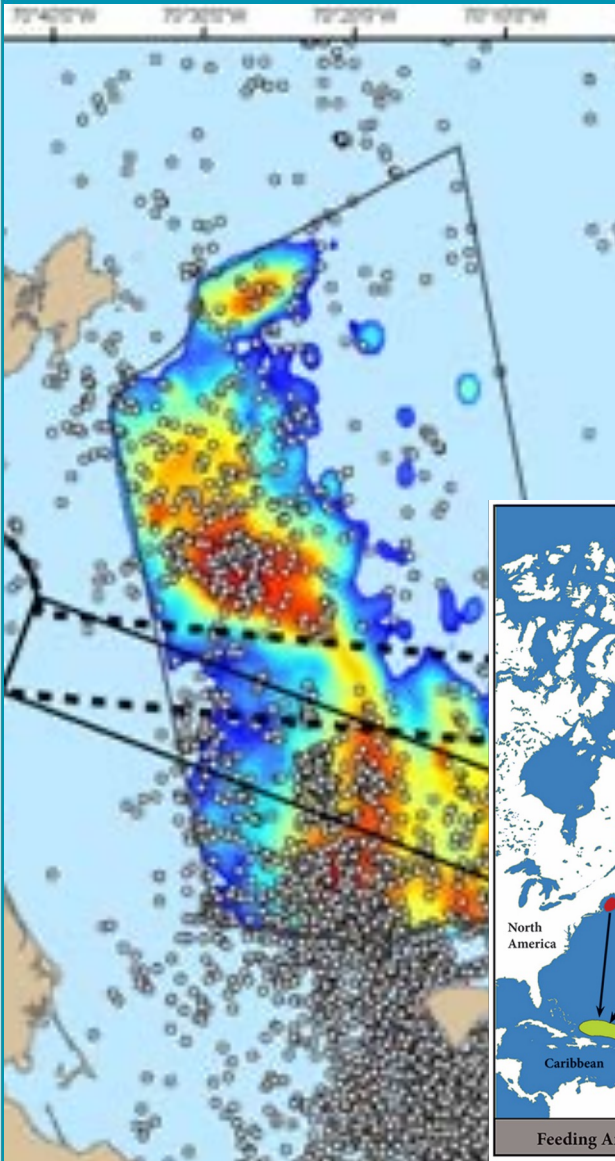


# Why Build Capacity?

## Inform Policy to Change Behavior and Reduce Risk



### Company Certificate



### Certificate of Corporate Responsibility

Recognizing your achievement and commitment to the protection of the North Atlantic right whale through compliance with the speed restrictions in seasonal management areas transiting the National Oceanic and Atmospheric Administrations's Stellwagen Bank National Marine Sanctuary between January 1, 2015 and May 15, 2015.

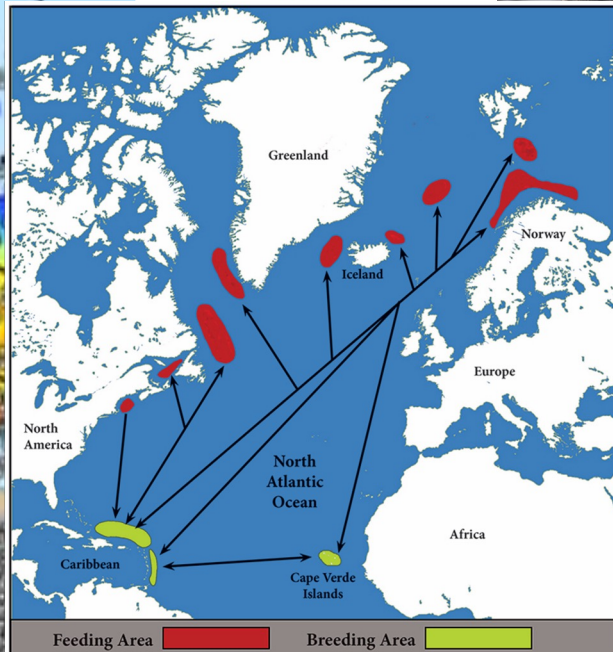
**Company Name** \_\_\_\_\_

**Grade**  
**A**

*Craig MacDonald*  
Superintendent,  
Stellwagen Bank National Marine Sanctuary

*Patrick Ramage*  
Whale Program Director,  
International Fund for Animal Welfare

**Your Choice Matters**



### RIGHT WHALE CORPORATE RESPONSIBILITY REPORT CARD

GRADE	COMPANIES	VESSELS
A+	62 (43%)	106 (50%)
A	56 (39%)	69 (33%)
B	4 (3%)	8 (4%)
C	5 (3%)	8 (4%)
D	2 (1%)	2 (1%)
F	16 (11%)	18 (9%)
<b>Total</b>	<b>145</b>	<b>211</b>

Source: Stellwagen Bank National Marine Sanctuary and International Fund for Animal Welfare

**Promoting Responsible Whale Watching**

Whale SENSE is a voluntary conservation program for whale watching companies concerned with responsible viewing practices, ocean stewardship, and education. By choosing a SENSE-ible tour, you help promote responsible whale watching practices that keep whales safe. Visit our website for a list of participating companies.

[www.whalesense.org](http://www.whalesense.org)

